

ALPHA BARRIER-COAT 2000

PROTECTIVE BARRIER FILM ON CARGO HOLD SURFACES,
ESPECIALLY FOR HIGHLY CORROSIVE CARGOES

DESCRIPTION

ALPHA BARRIER-COAT 2000 is the right choice before loading highly corrosive cargoes such as sulphur, salt etc. Those cargoes, but also petcoke, coal, pencil pitch, coke, cement, ores, minerals, feedstock etc. tend to penetrate in the minute pores of the paintwork and firmly attach.

Use **ALPHA BARRIER-COAT 2000** for preventing this and keep cargo holds "grain clean". It is specifically engineered against highly corrosive cargoes, like humid sulphur.

ALPHA BARRIER-COAT 2000 leaves a thin, temporary, non-sticky film on cargo hold surfaces. The film provides a barrier between the cargo and the cargo hold surfaces making the cleaning operation after unloading quicker and easier, and optimal cleaning result is achieved. Safe for foodstuff, as it does not contaminate the cargo. **ALPHA BARRIER-COAT 2000** is safe to the environment and to the personnel handling it. It is non-corrosive and safe on all coatings.

For standard, non-highly corrosive cargoes, there is the option of **ALPHA BARRIER-COAT 1000**.

For easy shipping and handling, **ALPHA BARRIER-COAT 3000** is also available.

APPLICATION

ALPHA BARRIER-COAT 2000 acts as a barrier and release agent between the cargo hold surface and the next cargo. It should be applied on clean surfaces. It may also be sprayed on superstructure and other areas exposed to dust during loading and unloading operations. Pay extra attention to its slippery nature, while it is still wet.

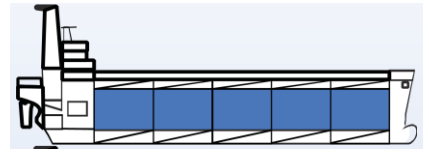
USE AND DOSING

Instructions are based on experience and are meant only as a guide since circumstances for each tank cleaning operation vary. They are not intended to interfere with the judgment of the vessel's responsible personnel.

Cargo residues should be removed prior to applying **ALPHA BARRIER-COAT 2000**. The only surface preparation requirement is to be as dry as possible before application.

ALPHA BARRIER-COAT 2000 has been developed to be conveniently used straight from the drum and does not require mixing. One liter of product will cover approximately 15-20 m². A 210-liter drum will cover approximately 3000-4000 m². For the most economical application, it should be sprayed in a sweeping pattern onto the surfaces of a tank, but it can also be brushed or rolled. As soon as the surface appears water wet, a proper film is created. Do not apply more than necessary. Depending on the environment, allow approximately 1½ to 2 hours for **ALPHA BARRIER-COAT 2000** to cure before loading cargo.

PROTECTIVE COATINGS



- ✓ Ideal before loading highly corrosive cargoes, such as humid sulphur, salt etc.
- ✓ Also suitable for petcoke, coal, pencil pitch, coke, cement, ores, minerals, feedstock and other difficult cargoes
- ✓ Provides temporary protection against corrosion
- ✓ Saves cleaning time and cleaning chemicals
- ✓ Completely safe on all coatings
- ✓ No special surface preparation, spraying equipment, or mixing required
- ✓ Rinses off with water, leaving no residue
- ✓ Helps with removal of cargo residues, residues wash away
- ✓ Suitable for use with most equipment
- ✓ Safe to use in occupied areas
- ✓ Composition conforming to MARPOL ANNEX V

PROBLEMS SOLVED

- ✓ Formation of cargo stains / footprints
- ✓ Metal corrosion
- ✓ Consumption of cleaning chemicals
- ✓ Costly turnaround times

APPLICATION AREAS

- ✓ Cargo holds
- ✓ Superstructure and areas exposed to dust during loading

PRODUCT CODE: MC 025

After discharge, cargo residues and **ALPHA BARRIER-COAT 2000** are easily removed with a power wash of fresh or salt water. Nonetheless, to ensure complete removal and avoid re-deposition of contaminants, a cleaning agent (such as **HOLDCLEAN XF**) is recommended, but at lower dosage rates than what normally is required.

PRODUCT PROPERTIES

Suitable for all coatings and metals. General Instructions: Avoid spillage, splashing and mishandling. Precautionary measures for body protection are strongly recommended before and during use.

Appearance:	Liquid	pH (undiluted):	Neutral
Type:	Water based	Flash Point:	None