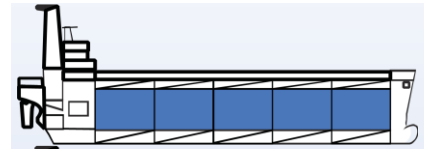


PROTECTIVE COATINGS



ALPHA BARRIER-COAT 3000

HIGHLY CONCENTRATED PROTECTIVE BARRIER – FORMULA DESIGNED FOR DILUTION

DESCRIPTION

ALPHA BARRIER-COAT 3000 is a highly concentrated mixture, designed for producing aqueous solutions that, when applied, form thin, temporary, non-sticky films on cargo hold surfaces.

Depending on the cargo, the dissolving ratio of **ALPHA BARRIER-COAT 3000** varies. Specialized for use before loading highly corrosive cargoes such as sulphur, salt etc. If diluted further, it can be used for petcoke, coal, pencil pitch, coke, cement, ores, minerals, feedstock etc.

The film formed from using **ALPHA BARRIER-COAT 3000**, prevents the penetration of the cargo particles in the minute pores of the paintwork, where they tend to attach firmly, thus keeping cargo holds "grain clean". With **ALPHA BARRIER-COAT 3000** the cleaning operation after unloading is quicker and easier.

Safe for foodstuff, it does not contaminate the cargo, safe to the environment and to the personnel handling it. It is non-corrosive and safe on all coatings.

APPLICATION

The diluted solutions that derive from diluting **ALPHA BARRIER-COAT 3000** act as barriers and release agents between the cargo hold surface and the next cargo. Apply on clean surfaces. Also suitable for spraying on superstructure and other areas exposed to dust during loading and unloading operations. Pay extra attention to its slippery nature, while it is still wet.

USE AND DOSING

Instructions are based on experience and are meant only as a guide since circumstances for each tank cleaning operation vary. They are not intended to interfere with the judgment of the vessel's responsible personnel.

Cargo residues should be removed prior to applying the dissolved product. The only surface preparation requirement is to be as dry as possible before application.

Before using, mix as follows:

Before loading highly corrosive cargoes such as sulphur, salt etc.:

1:1½ with fresh water to obtain **ALPHA BARRIER-COAT 2000** (with 1 drum of **ALPHA BARRIER-COAT 3000**, produce 2½ drums of **ALPHA BARRIER-COAT 1000**).

Before petcoke, coal, pencil pitch, coke, cement, ores, minerals, feedstock etc.:

1:2 with fresh water to obtain **ALPHA BARRIER-COAT 1000** (with 1 drum of **ALPHA BARRIER-COAT 3000**, 3 drums of **ALPHA BARRIER-COAT 1000** are produced).

- ✓ Universal solution; Ideal before loading highly corrosive cargoes, such as humid sulphur, salt etc., but also petcoke, coal, pencil pitch, coke, cement, ores, minerals, feedstock and other difficult cargoes
- ✓ Dilute appropriately, Depending on the cargo
- ✓ Prevents from cargo penetration in paint
- ✓ Provides temporary protection against corrosion
- ✓ Saves cleaning time and cleaning chemicals
- ✓ Completely safe on all coatings
- ✓ Rinses off with water, leaving no residue
- ✓ Safe to use in occupied areas
- ✓ Composition conforming to MARPOL ANNEX V

PROBLEMS SOLVED

- ✓ Formation of cargo stains/ footprints & metal corrosion
- ✓ Consumption of cleaning chemicals
- ✓ Costly turnaround times

APPLICATION AREAS

- ✓ Cargo holds
- ✓ Superstructure and areas exposed to dust during loading

PRODUCT CODE: MC 026

The final solutions are used straight from the drum. One liter of final solution will cover approximately 15-20 m². A 210-liter drum will cover approximately 3000-4000 m². For the most economical application, it should be sprayed in sweeping pattern onto the surfaces of a tank, but it can also be brushed or rolled. As soon as the surface appears water wet, a proper film is created. Do not apply more than necessary. Depending on the environment, allow approximately 1½ to 2 hours for the film to cure before loading cargo.

After discharge, residual cargo and the temporary protective film are easily removed with a power wash of fresh or salt water. Nonetheless, to ensure complete removal and avoid re-deposition of contaminants, a cleaning agent (such as **HOLDCLEAN XF**) is recommended, but at lower dosage rates than what normally is required.

PRODUCT PROPERTIES

Suitable for all coatings and metals. General Instructions: Avoid spillage, splashing and mishandling. Precautionary measures for body protection are strongly recommended before and during use.

Appearance:	Liquid	pH (undiluted):	Neutral
Type:	Water based	Flash Point:	None