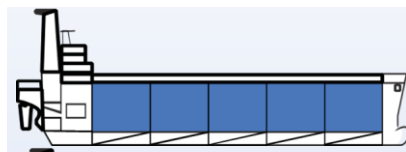


### TANK CLEANERS



## ALPHASAFE

### LOW-TOXICITY TANK CLEANER AND DEGREASER WITH EMULSIFYING PROPERTIES

#### DESCRIPTION

**ALPHASAFE** is a multi-functional tank cleaner and degreaser with non-chlorinated or aromatic hydrocarbons in its composition. It can be used diluted or neat for cleaning cargo tanks, deep tanks, and bilges without affecting most tank coatings.

**ALPHASAFE** is an IMO approved tank cleaner. Only cleaners registered in Annex10 of IMO's MEPC.2/Circular can be used and disposed of at sea for cargo tank cleaning, when the cargo residue slops are disposable at sea. Its composition meets the criteria for not being harmful to the marine environment according to MARPOL ANNEX V.

#### APPLICATION

Apply **ALPHASAFE** to remove inert gas soot, vegetable, fish and animal oils and fats, crude palm oil, styrene, palm fatty acids, fatty acid and greases, heavy mineral oils, greases, additives, lubricants, asphalt, distillation residues, coal tar, several synthetic resins, paraffines. It is suitable for use on stainless steel, epoxy & zinc coated tanks.

#### USE AND DOSING

Instructions are based on experience and are meant only as a guide since circumstances for each tank cleaning operation vary. They are not intended to interfere with the judgment of the vessel's responsible personnel.

**Before Tank Cleaning:** Prewash the tanks with hot water. After the discharge of drying or semi-drying oils, immediately prewash with cold water, to avoid hardening of oil residues. After the completion of 1 cycle, start increasing water temperature to increase effectiveness of the prewash.

**Re-circulation Method:** Prepare the chemical solution in the tank to be cleaned or in the slop tank. Depending on the degree and nature of contamination, **ALPHASAFE** is circulated a 0.1-0.2% solution (1-2 litres per ton wash water) for a minimum period of 2-4 hours at a temperature of 65-80°C. After circulation, rinse thoroughly with (fresh) water. In case the next cargo is of high purity standard make sure to rinse with D.I. water, to meet the necessary cleanliness standard.

**Direct Injection:** Inject 0.1-0.2% of **ALPHASAFE** into the washing system. Maintain cleaning temperatures up to 60°C. Cleaning time is 2-6 hours, followed by thorough rinsing with fresh hot water.

**Spray Method:** Spray the tank surfaces with a solution of **ALPHASAFE** and let the product act for at least 30 min. Then rinse all tank surfaces with hot water for 1 or 2 cycles (approx. 30-45 min.) or as long as needed to remove the cleaning detergent. Optimum results are achieved using hot water between 60 and 80°C.

**Soaking:** Use undiluted **ALPHASAFE** and immerse heavily soiled parts into a bath. For medium to light soiled parts, use a 10-30% solution in water. Soak parts for at least 30 minutes, before washing off with water.

- ✓ Tank cleaner and degreaser emulsifier with a wide range of applications.
- ✓ Quick penetration
- ✓ Reduces cleaning time
- ✓ Non – toxic and environmentally safe
- ✓ Composition conforming to MARPOL ANNEX V
- ✓ IMO approved tank cleaner

#### PROBLEMS SOLVED

- ✓ Oil & Organic Deposits Cleaning
- ✓ Fuel Oils/Heavy Crude Oils Cleaning
- ✓ Organic Contamination Oil
- ✓ Oily pet coke
- ✓ Asphalt
- ✓ Gas freeing of deep tanks and fuel oil tanks

#### APPLICATION AREAS

- ✓ Cargo tanks
- ✓ Cargo holds
- ✓ Bilges
- ✓ Deep & double bottom tanks
- ✓ Engine rooms
- ✓ Fuel oil tanks
- ✓ General cleaning

PRODUCT CODE: MC 083

**PRODUCT PROPERTIES**

Compatible with all normally used metals and their alloys. Rubber/synthetic rubber may swell. It is recommended to test all cleaning chemicals on a small area of tank coating, before full scale application. General Instructions: Avoid spillage, splashing and mishandling. Precautionary measures for body protection are strongly recommended before and during use.

|             |               |                 |          |
|-------------|---------------|-----------------|----------|
| Appearance: | Liquid        | pH (undiluted): | N/A      |
| Type:       | Organic based | Pour Point:     | < - 15°C |