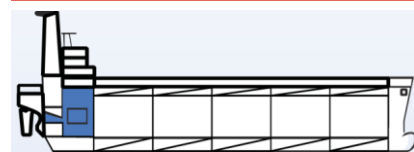


### FUEL ADDITIVES

## FC 850M

COMBUSTION IMPROVER, SOOT REDUCER  
AND DEPOSIT MODIFIER FOR FUEL OIL



#### DESCRIPTION

**FC 850M** is a specialized combustion improver that comprises a mixture of organometallic catalysts, ash deposits modifiers and special surfactants, suitable for low and medium speed diesel engines.

With the use of **FC 850M** we achieve improved combustion, reduced exhaust gases and soot, protection against corrosion of low and high temperatures, as well as reduced fuel consumption. Also with the continuous and correct dosing of **FC 850M** carbon deposits are eliminated, resulting to a cleaner engine and reduced maintenance costs.

#### APPLICATION

**FC 850M** is suitable for low and medium speed diesel engines.

#### USE AND DOSING

**FC 850M** is recommended to be added to the fuel line, using a dosing pump in order to achieve better and more uniform mixing. Alternatively, it can be applied by adding the corresponding dose directly to the settling tank before or during bunkering.

The dosage may vary depending on the condition of the boiler or engine as well as the quantity of the emissions.

The initial dosage is 1:2000 and should be maintained for 2-4 weeks. The recommended dosage may vary from 1:3000 to 1:10000.

#### PRODUCT PROPERTIES

General Instructions: Avoid spillage, splashing and mishandling. Precautionary measures for body protection are strongly recommended before and during use.

Appearance:	Liquid	pH (undiluted):	N/A
Type:	Organic based	Flash Point:	<-15°C

- ✓ Reduces sodium, vanadium and sulphur deposits
- ✓ Reduces low and high temperature corrosion
- ✓ Drastically reduces exhaust gas emissions
- ✓ Improves combustion efficiency
- ✓ Reduces maintenance cost
- ✓ Keeps the engine clean and reduces fuel consumption.

#### PROBLEMS SOLVED

- ✓ Combustion problems
- ✓ Ash deposits
- ✓ Fuel consumption
- ✓ Engine efficiency

#### APPLICATION AREAS

- ✓ Settling or service tank
- ✓ Fuel line

PRODUCT CODE: FT 280