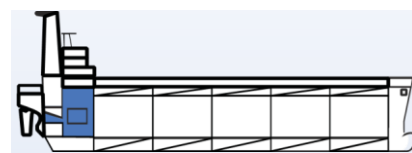


MAINTENANCE

ALPHA CARBON REMOVER

POWERFUL SOLVENT CLEANER FOR CARBON DEPOSITS, VARNISH, GUMMY MATTER AND OTHER STUBBORN DEPOSITS



DESCRIPTION

ALPHA CARBON REMOVER is a combination of highly active, fast-penetrating solvents with selected detergents and corrosion inhibitors. **ALPHA CARBON REMOVER** is designed to remove carbon deposits, varnish, gummy matter and other stubborn deposits, from diesel engine pistons, rings, valves and other parts where oil combustion products may be accumulated.

APPLICATION

ALPHA CARBON REMOVER penetrates deposits and dissolves oil, grease, varnish and most products of incomplete combustion. Insoluble mineral matter (carbon, soot, ash, dirt) is softened and it can easily be removed with a water rinse.

ALPHA CARBON REMOVER has many other uses as parts and equipment cleaner. For example, it is an excellent paint stripper for oil base, latex and epoxy paints.

USE AND DOSING

Soaking Method:

After removing rubber trim, place the parts in a pan or drum of suitable size with enough **ALPHA CARBON REMOVER** to cover. Small parts may be put into a wire basket for easy removal and recovery. Use a water seal of 7.5 - 15cm (3-6in.) to retain the vapours. Allow to soak until deposits are completely dissolved or softened, (usually 4-8 hours). The actual time required will depend on the thickness and composition of the deposits.

- For heavy deposits, it is desirable to stir or agitate the solvent.
- For carbonized deposits, the solvent may be heated to 55°C - 60°C (130°F - 140°F), but **not above** that. Afterwards, cover the solution with a layer of water to retain the vapours, as indicated above.

Remove from the cleaning bath, rinse with water to remove any softened material remaining on the parts, and dry by wiping or with compressed air.

ALPHA CARBON REMOVER is heavier than water and two separate layers are formed, with the water on top. Addition of water does not dilute the cleaner or impair its effectiveness in any way and will act as a vapor barrier.

Brushing Method:

For in-place cleaning of large, heavy equipment, **ALPHA CARBON REMOVER** may be applied to the soiled parts with a paint brush (do not use a brush with bristles set in rubber). Continue brushing, keeping the brush moist with **ALPHA CARBON REMOVER**, until the parts are clean. Provide adequate positive ventilation in the cleaning area. After cleaning, wipe the parts with a cloth soaked in water, then with a dry cloth.

- ✓ High solvency power
- ✓ Penetrates and softens hard-to-remove carbon deposits
- ✓ Reduces need for mechanical cleaning or use of heat
- ✓ Non-corrosive to most metals
- ✓ Heavier than water; Allows use of water seal to minimize odour and act as a rinse agent
- ✓ Suitable for soaking or closed-circuit cleaning methods

PROBLEMS SOLVED

- ✓ Carbon deposits
- ✓ Varnish
- ✓ Gummy matter
- ✓ Various cleaning tasks

APPLICATION AREAS

- ✓ Diesel engine pistons, rings, valves, fuel injectors, connecting rods.
- ✓ Fuel and lube oil filters
- ✓ Oil cooler

PRODUCT CODE: MC 070

Closed Circuit:

Prior to blowing steam through the system, recirculate undiluted **ALPHA CARBON REMOVER** in order to remove the residual oil. Heat up to 50°C for better results. Circulation time depends on the degree of fouling and may vary from 4 to 24 hours. Upon completion, drain and flush with water or kerosene.

PRODUCT PROPERTIES

Avoid using on cast iron and mild steel surfaces. Rubber/synthetic rubber may swell. General Instructions: Avoid spillage, splashing and mishandling. Precautionary measures for body protection are strongly recommended before and during use.

Appearance:	Liquid	pH:	N/A
Type:	Organic based	Pour Point:	< - 15°C